



MEDOMSLEY MEWS

PENNINE LODGE - CHEVIOT LODGE
DH8 6RD



LIVE LIFE IN RURAL LUXURY

MEDOMSLEY MEWS - BEAUTIFULLY BUILT DORMER BUNGALOWS IN AN IDYLIC RURAL SETTING

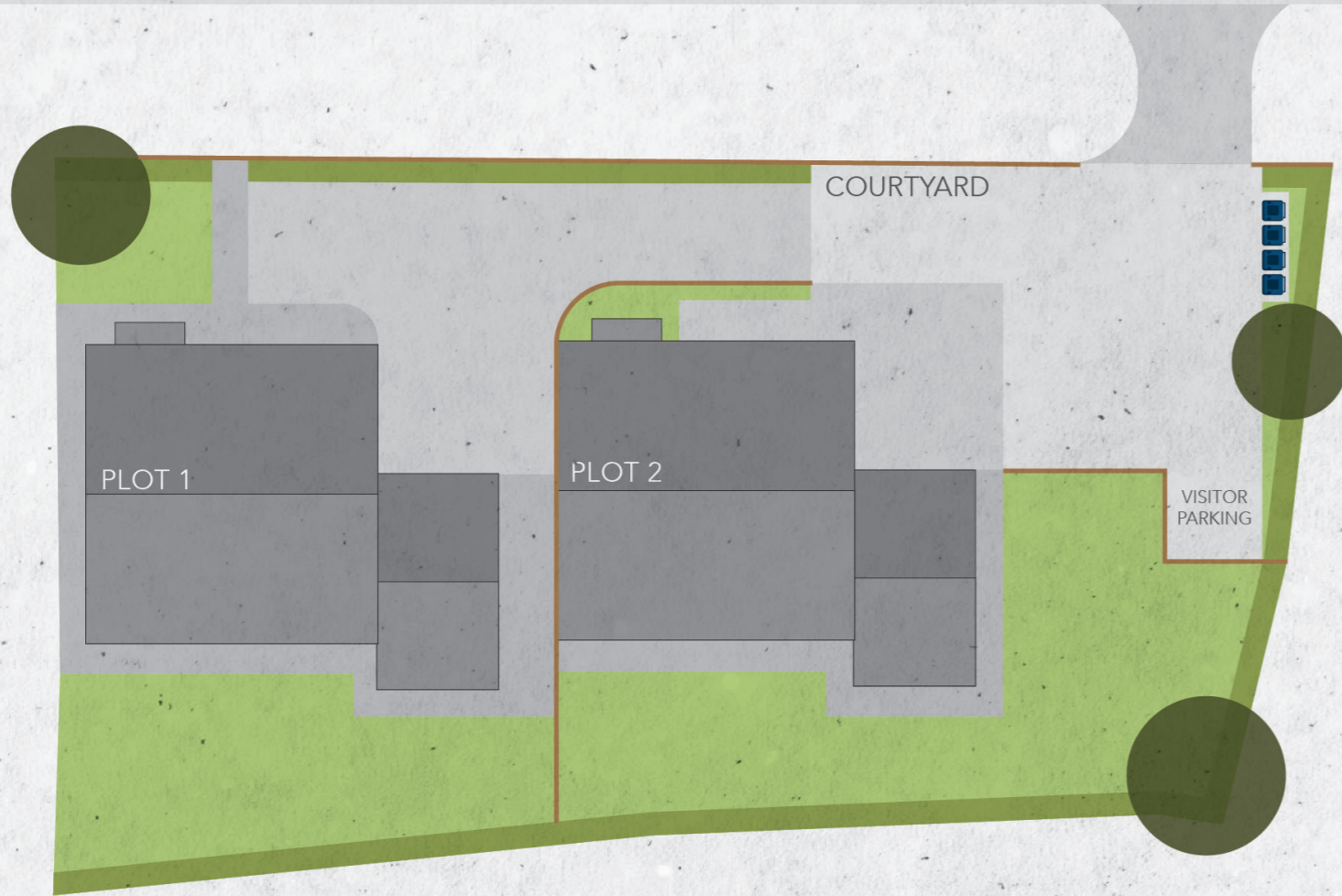
Forric Homes presents an exclusive offering - two exquisitely crafted detached homes located in the charming village of Medomsley, in the heart of rural County Durham. These luxurious homes have been designed with contemporary lifestyles in mind, featuring meticulous attention to detail and top-notch finishing.

Constructed using locally sourced stone, the development seamlessly blends in with the picturesque surroundings, reflecting the architectural style of the area. Each residence boasts a canopied front entrance, driveway parking, and a spacious garden - providing the perfect balance between countryside living and easy access to local amenities such as shops and pubs.

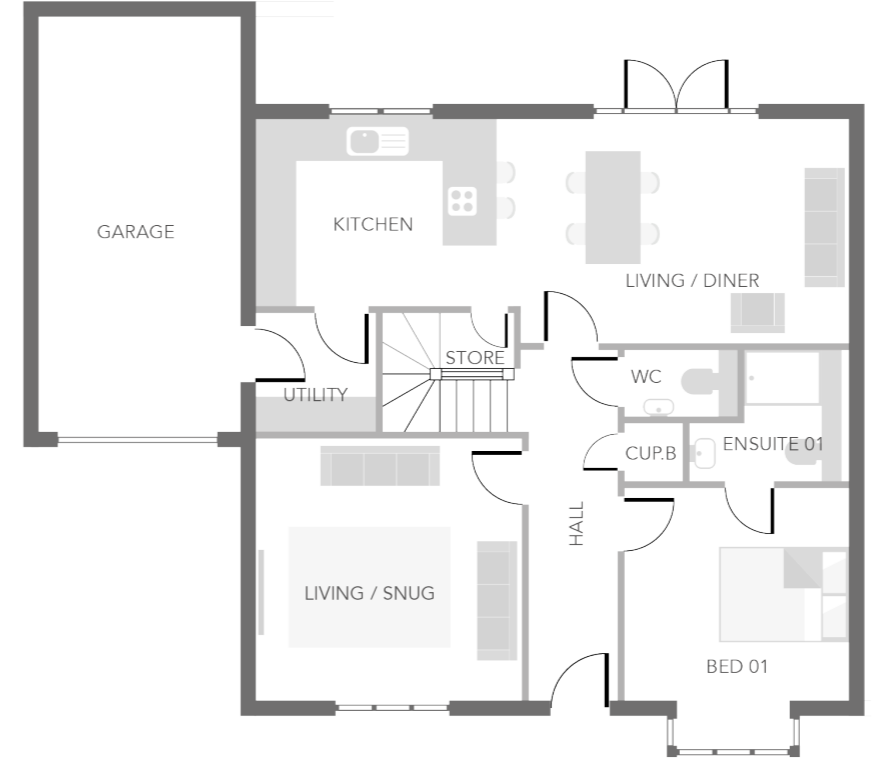
This rare opportunity to own a home that offers a semi-rural lifestyle in the Derwent Valley includes only two properties. Experience the beauty of this peaceful region with its breathtaking scenery, open spaces, and tranquil hills and valleys just a few minutes away. Don't miss out on the chance to make one of these stunning homes your own.

MEDOMSLEY MEWS
LIVE LIFE IN RURAL LUXURY

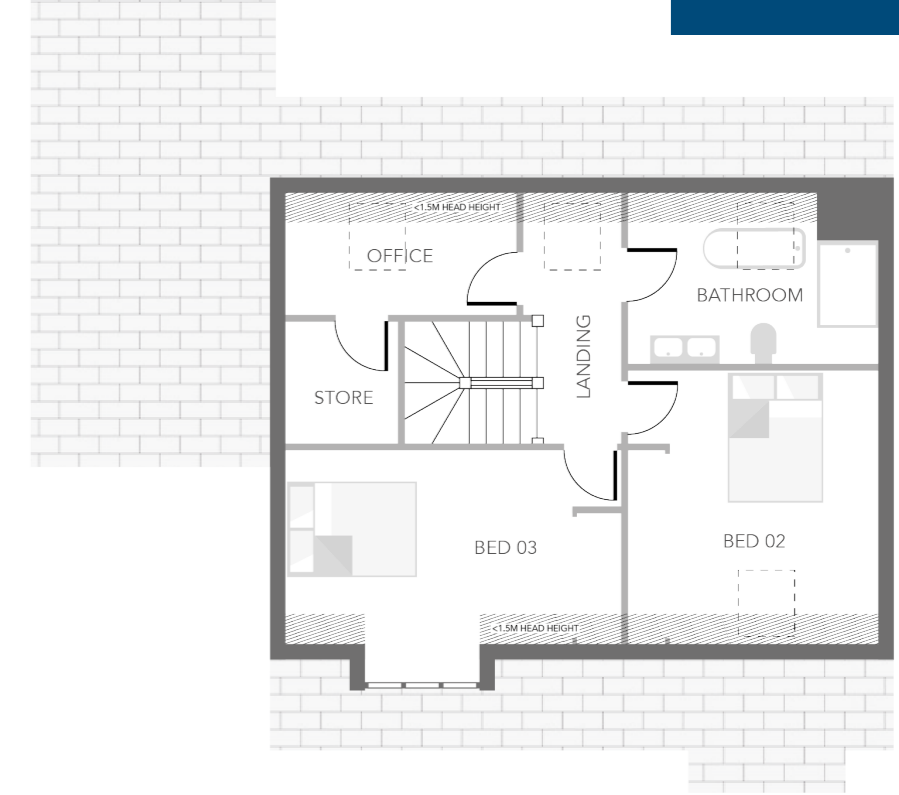
SITE PLAN



FLOOR PLAN



ROOM	SIZE (LENGTH x WIDTH)		
Living / Snug	3.85	x	3.81
Bed 01	3.27	x	3.06
Living / Diner	4.80	x	3.28
Kitchen	3.81	x	2.73
Utility	1.62	x	1.79
Garage	3.00	x	6.00



ROOM	SIZE (LENGTH x WIDTH)		
Bed 02	3.63	x	3.50
Bed 03	4.87	x	2.34
Office	3.6	x	2.00

Medomsley Mews, Medomsley, Durham, DH86RD.



MEDOMSLEY MEWS SPECIFICATIONS

Kitchen

Luxury designed kitchen with integrated fridge freezer, ceramic hob and dish washer. Integrated microwave and oven within tall kitchen cabinets.

Flooring

Beautifully designed luxury vinyl flooring to hallway and kitchen. Carpets to all bedrooms and staircase.

Bathrooms and en-suites

Luxury Grohe sanitary ware with wall hung WC and polished chrome dual flush plate, wall hung basins and chrome

heated towel rails. Floors to all bathrooms and ensuites fully tiled. Walls half tiled and fully to shower areas.

The Utility Room

Units to match kitchen choice with laminate worktop and upstand. Plumbing for washing machine and space for tumble dryer within utility room units.

Heating and Electrical

Gas fired central heating with Worcester combi boiler with underfloor heating downstairs and room zonal control LED

downlights to kitchen and bathrooms and pendants to bedrooms and living spaces. External feature PIR lighting to front and rear elevations.

External finishes

Landscaped and turfed front and rear gardens. Outside tap and electrical sockets. Fencing to entire perimeter. Block paving to front drive and paved patio and footpaths.

Quality

10 year ICW new home warranty, enhanced by developers personal service.



WELCOME TO FORRIC HOMES

Award winning house builder Forric Homes has forged a reputation for delivering luxury bespoke homes throughout the north east of England. We are a family run business, with a passion for building your forever home.

We approach every project with the objective of building homes that we would be proud to live in. Our many years' experience and construction expertise allow us to blend contemporary design with traditional craft led building techniques and deliver family homes, perfect for living in today.



A FAMILY RUN HOUSE BUILDER OPERATING THROUGHOUT THE NORTH EAST

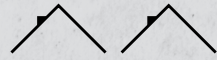
With our family values at the core of everything we do, we strive to deliver the highest level of build quality, pre-sale and aftercare customer service with all of our developments. Forric Homes is an evolution of our main operating business Forric Construction which has been delivering residential led development for over 30 years in the housebuilding sector. The business is now led by brothers Richard and Thomas Forster.



www.forrichomes.co.uk

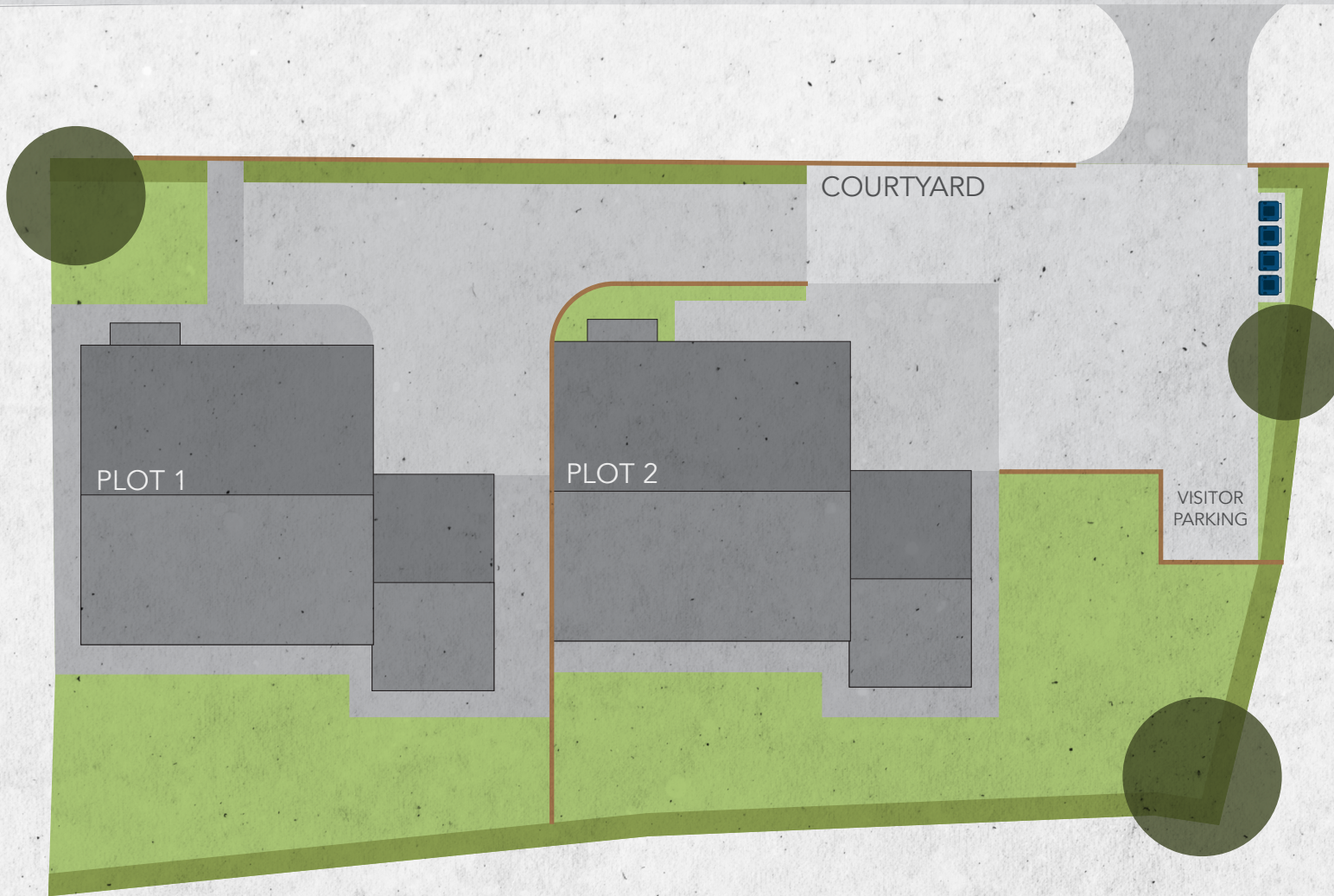
UrbanBASE
The
NEW
HOMES
agent

0845 643 1186
www.urban-base.com



MEDOMSLEY MEWS

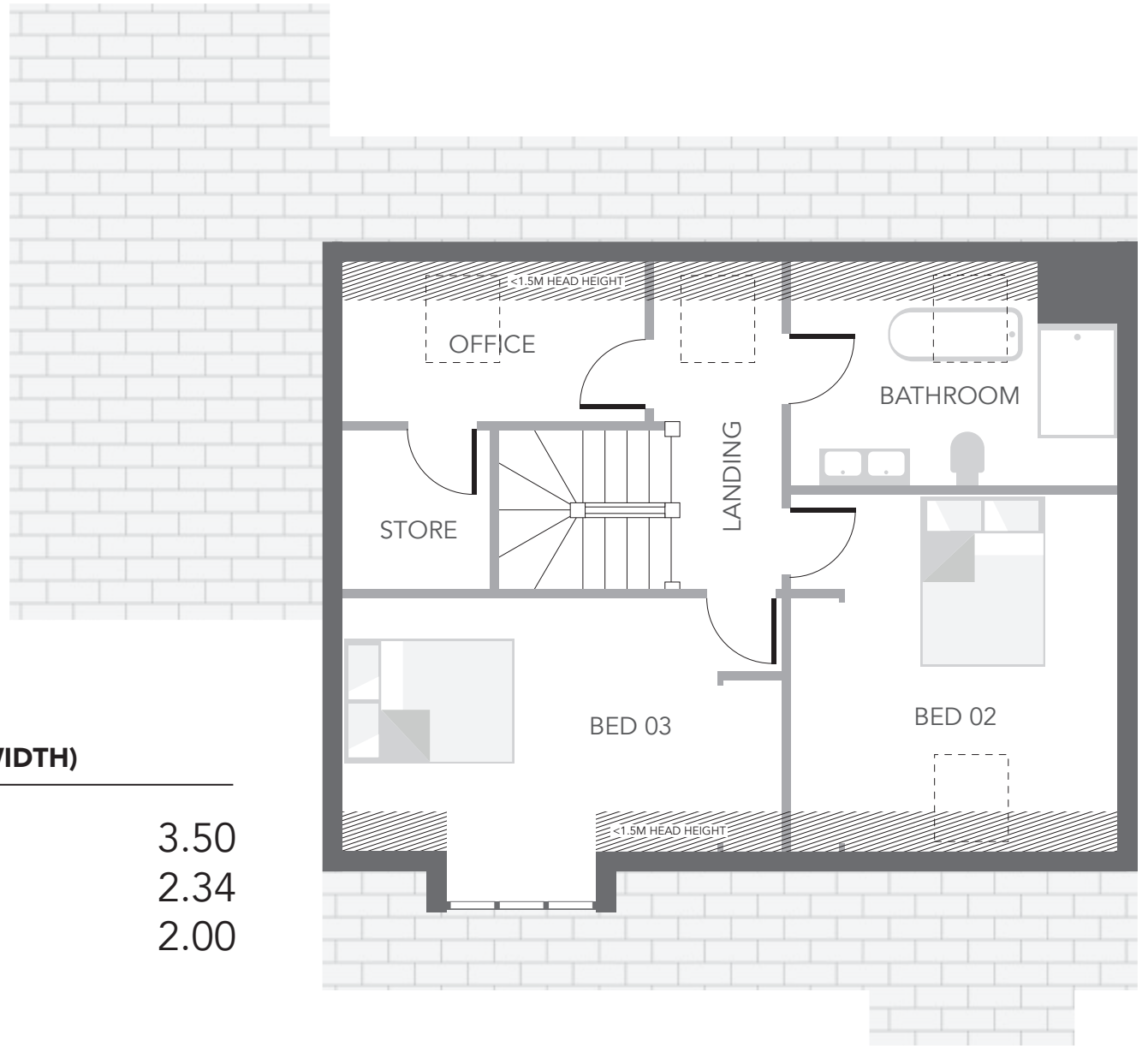
SITE PLAN

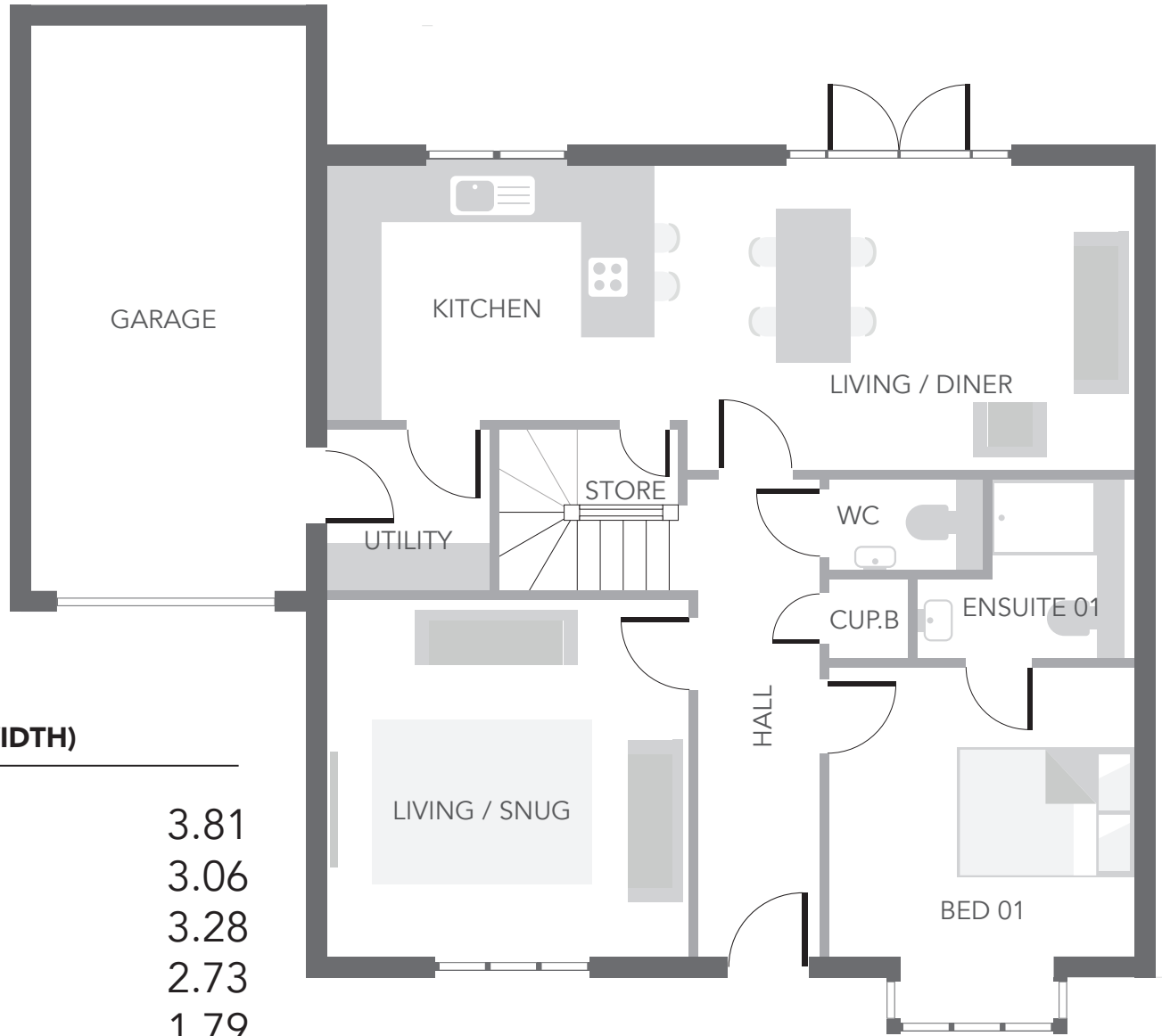


ROOM

SIZE (LENGTH x WIDTH)

Bed 02	3.63	x	3.50
Bed 03	4.87	x	2.34
Office	3.6	x	2.00





ROOM

**SIZE
(LENGTH x WIDTH)**

ROOM	SIZE (LENGTH x WIDTH)
Living / Snug	3.85 x 3.81
Bed 01	3.27 x 3.06
Living / Diner	4.80 x 3.28
Kitchen	3.81 x 2.73
Utility	1.62 x 1.79
Garage	3.00 x 6.00